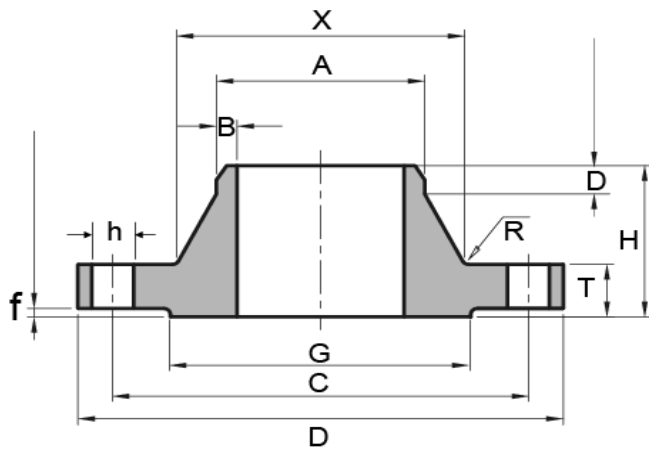


EN1092-1 PN16 Welding Neck Flanges Type 11



Rated Diameter	Flange Dimension					Neck Size				Raised Face		Screws Parameter			Approx Weight per Piece
	Hub Diam. Chamfer of W.N.	Dia of Bolt Circle	O.D.	Thk. of Flange	Length Hub	Diam. Of Hub	Wall Thickness	Fillet Radius Min	Length of Wall Thickness	Dia of R.F.	Thick-ness of R.F.	Dia of Bolt Holes	Thread	Number of Bolt Holes	
DIN	A	C	D	T	H	X	B	R	D	G	f	h		n	KG
15	21,3	65	95	16	38	32	2,00	4	6	45	2	14	M12	4	0,678
20	26,9	75	105	18	40	40	2,30	4	6	58	2	14	M12	4	0,768
25	33,7	85	115	18	40	46	2,60	4	6	68	2	14	M12	4	1,090
32	42,4	100	140	18	42	56	2,60	6	6	78	2	18	M16	4	1,300
40	48,3	110	150	18	45	64	2,60	6	7	88	3	18	M16	4	1,910
50	60,3	125	165	18	45	74	2,9	6	8	102	3	18	M16	4	2,530
65	76,1	145	185	18	45	92	2,9	6	10	122	3	18	M16	4	3,030
80	88,9	160	200	20	50	105	3,2	6	10	138	3	18	M16	8	3,920
100	114,3	180	220	20	52	131	3,6	8	12	158	3	18	M16	8	4,620
125	139,7	210	250	22	55	156	4,0	8	12	188	3	18	M16	8	6,300
150	168,3	240	285	22	55	184	4,5	10	12	212	3	22	M20	8	7,810
200	219,1	295	340	24	62	235	6,30	10	16	268	3	22	M20	12	11,500
250	273,0	355	405	26	70	292	6,30	12	16	320	3	26	M24	12	16,700
300	323,9	410	460	28	78	344	7,10	12	16	378	4	26	M24	12	22,100
350	355,6	470	520	30	82	390	8,00	12	16	438	4	26	M24	16	32,800
400	406,4	525	580	32	85	445	8,00	12	16	490	4	30	M27	16	41,100
450	457,0	585	640	34	83	490	8,00	12	16	550	4	30	M27	20	48,500
500	508	650	715,0	36	84	548	8,0	12	16	610	4	33	M30	20	63,400
600	610	770	840,0	40	88	670	10,0	12	18	725	5	36	M33	20	96,000
700	711	840	910,0	40	104	755	10,0	12	18	795	5	36	M33	24	96,500
800	813	950	1025,0	41	108	855	12,5	12	20	900	5	39	M36	24	122,000
900	914	1050	1125,0	48	118	955	12,5	12	20	1000	5	39	M36	28	155,000
1000	1016	1170	1255,0	59	137	1058	12,5	16	22	1115	5	42	M39	28	233,000
1200	1219	1390	1485,0	78	160	1262	14,2	16	30	1330	5	48	M45	32	390,000
1400	1422	1590	1685,0	84	177	1465	16,0	16	30	1530	5	48	M45	36	495,000
1600	1626	1820	1930,0	102	204	1668	17,5	16	35	1750	5	56	M52	40	760,000
1800	1829	2020	2130,0	110	218	1870	20,0	16	35	1950	5	56	M52	44	929,000
2000	2032	2230	2345,0	124	238	2072	22,0	16	40	2150	5	62	M56	48	1.185,000